



**MADISON**  
DISTRICT PUBLIC SCHOOLS



**Location:** Madison Heights, Michigan



**Enrollment:** 900

MISTAR-Q enables the district to:



Streamline enrollment and schedule planning



Modernize behavior referrals



Increase parental engagement



Improve reporting & data capabilities

## Madison District Public Schools Improves Operations and Student Support with MISTAR-Q SIS

For over 15 years, Madison District Public Schools has utilized MISTAR-Q, a Student Information System suite (SIS) specifically tailored to the needs of Michigan school districts. At the core of Madison Schools' mission is the commitment to student success and ongoing innovation. The MISTAR-Q suite has played a pivotal role in supporting this mission with solutions that help the district achieve its educational and operational goals.

We spoke with Patricia Perry, the Superintendent of Madison District Public Schools, to explore how MISTAR-Q has helped the district's journey toward continued success through streamlining core processes, efficient access to data and reports, and modernized behavior referrals.

### Streamlining Enrollment and Schedule Planning

MISTAR-Q's online registration module allowed Madison to improve the efficiency of their student registration process while improving the quality of data collected when students enroll. In addition, MISTAR-Q improved master schedule planning, allowing the district to assign more students to their requested classes.

## Student Enrollment

When the district transitioned from a traditional paper-based system to MISTAR-Q's online platform for student enrollment, it significantly improved the accuracy and efficiency of collecting and maintaining student data. A notable example of this efficiency is a feature that automatically alerts the Superintendent when a student's Home Language Survey shows a need for English as a Second Language (ESL) services, ensuring timely student support.

"The automatic notification has helped us tremendously," Perry explained. "We no longer have to search for those students manually, which saves us significant time and effort. It also ensures that no student slips through the cracks, allowing us to provide quick and necessary support."

## Master Schedule Planning

Another notable feature of MISTAR-Q is its support for master schedule planning. The SIS enables administrators to create schedules efficiently, assign more students to their requested classes, and manage class capacities. By centralizing and streamlining the scheduling process, MISTAR-Q simplifies timetable management, ensuring that the school's operational needs are met effectively.



"MISTAR-Q has transformed our master schedule planning process. The system has simplified a complex and time-consuming task, ensuring that our scheduling and class size needs are met effectively and seamlessly." - **Patricia Perry, Madison Schools**



## More Intuitive Reporting and Data Analysis Capabilities

For Perry, one of the significant advantages of MISTAR-Q is its user-friendly reporting capabilities. Reports are easy to identify and generate, saving time and reducing the likelihood of errors. Other SIS products that often require complex queries for report generation, by comparison, MISTAR-Q offers straightforward, accessible options that make it easier for users to access data and analyze student performance.

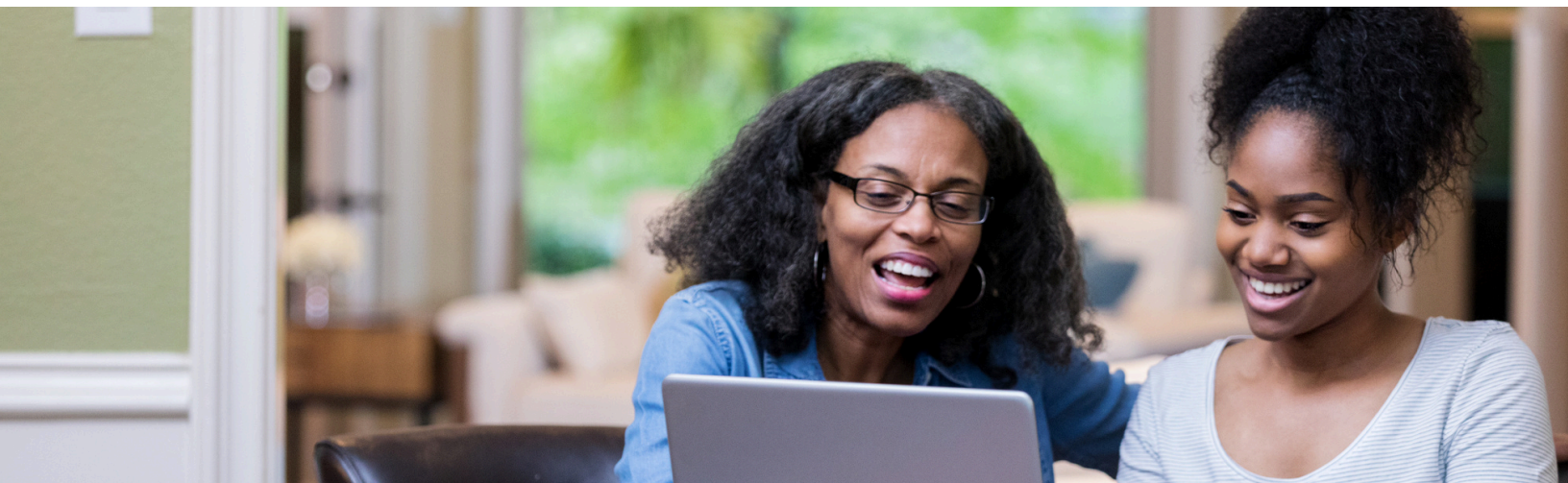
"Quick access to data makes it much more actionable," Perry noted. "Rather than spending time sifting through data or compiling reports manually, MISTAR-Q simplifies the process, which has significantly saved us time and effort."



## Modernizing Behavior Referrals

The district has taken significant steps to modernize its behavioral documentation with MISTAR-Q. The shift to digital behavior referrals has notably improved accuracy and detail in documenting behavior. Previously, teachers had to manually write referrals on paper and deliver them to the office.

The new system streamlines the process, enabling real-time documentation and electronic submissions that more effectively track behavioral patterns. This timely and detailed data helps staff make more informed decisions about interventions and support, improving school safety and student support.



## Increasing Parental Engagement

Madison Schools recognizes that parental involvement is vital for student success and has plans to enhance this involvement. The district plans to increase parental engagement in the upcoming school year by encouraging them to regularly log into MISTAR-Q's newly redesigned parent portal.

Parents will be asked to check important documents, such as Individualized Education Plans (IEPs) and report cards, through an online parent portal to ensure they stay up-to-date with their child's progress. The district hopes to foster a stronger connection between home and school, motivating parents to actively participate in their child's educational journey.

## Support and Collaboration with ISD

MISTAR-Q has proven to be a robust and reliable SIS for Madison District Public Schools. The system's flexibility and adaptability make it invaluable as the district continues to evolve and expand its educational offerings. The consortium's support has also proven invaluable in ensuring the SIS meets the district's needs.



“I’d tell anyone looking into a new SIS to go with MISTAR-Q. The system makes everything simple to manage, which has been a huge time-saver for us. It’s allowed us to focus more on what really matters—supporting our students and enhancing their educational experience.” - **Patricia Perry, Madison Schools**

